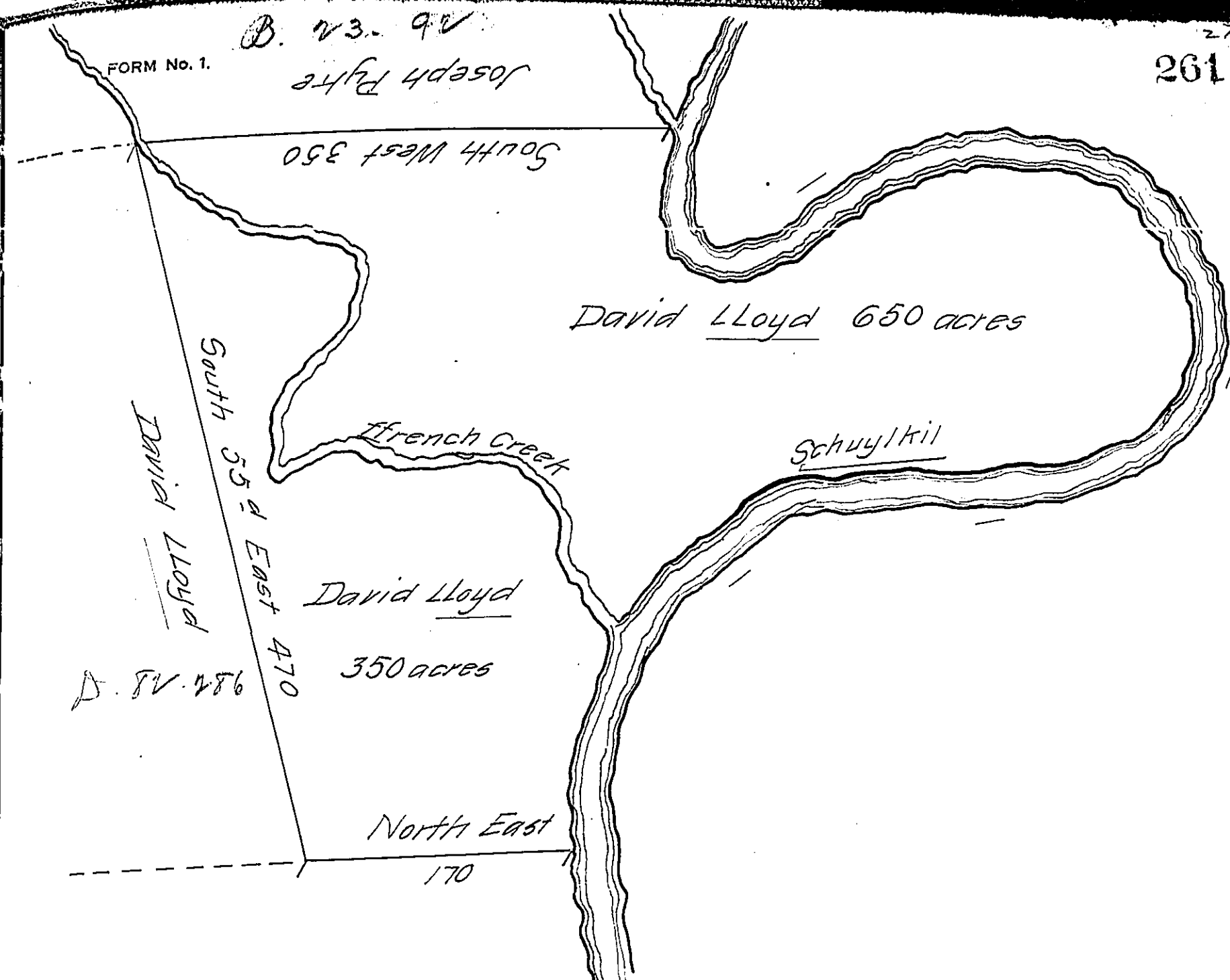


B. 23. 90

Joseph Pythe



D. 8V. 286

Surveyed and Laid out the Sixth day of April 1712 unto David Lloyd Esq<sup>r</sup> a Tract of Land in Right of John Henry Sproegle Situate in the County of Chester beginning at a hickery by the River Schuylkil and at the Mouth of Stone Creek Thence South West by Joseph Pythe's land three hundred and fifty perches to a white oak by the French Creek. Then South eighty five degrees East by another Tract of the said David LLOYD's land four hundred and seventy perches to a post Then North East by Samuel Buchly's land one hundred and seventy perches to a hickry by the said River Schuylkil then up the same on several Courses One thousand Ninety four perches to the place of beginning Containing One thousand acres With allowance of Six p Cent

Certified by Jacob Taylor

IN TESTIMONY that the above is a copy of the original remaining on file in the Department of Internal Affairs of Pennsylvania, made conformably to an Act of Assembly approved the 16th day of February, 1833, I have hereunto set my Hand and caused the Seal of said Department to be affixed at Harrisburg, this first day of August 1910.

*Mary Howell*  
 Secretary of Internal Affairs.